

LILY & LALI<sup>®</sup>  
GULS PRIDE  
A PRODUCT OF Sfriona<sup>®</sup> GROUP

Mirunal

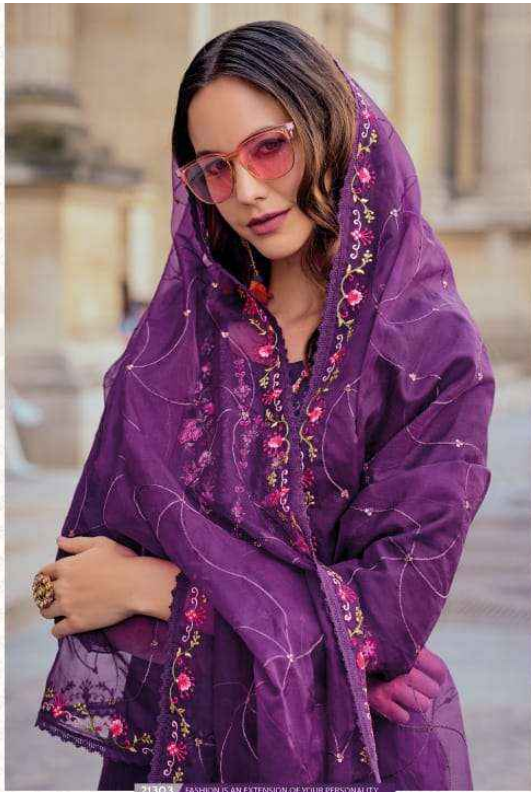




Lily & Lali  
GULS PRIDE  
A PRODUCT OF GULS GROUP

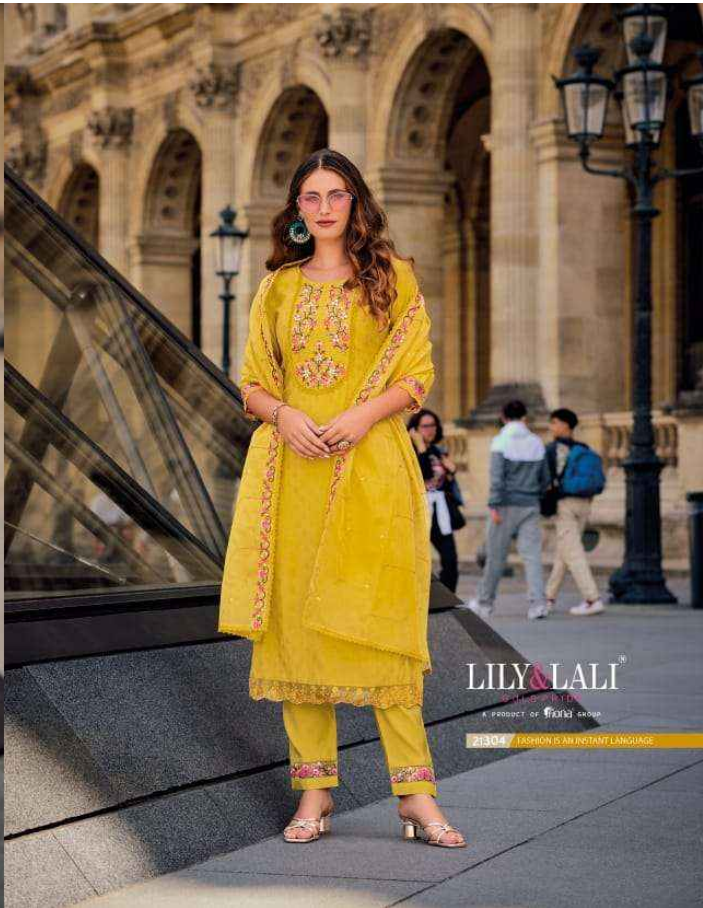
21302 FASHION IS AN EXTENSION OF YOUR PERSONALITY

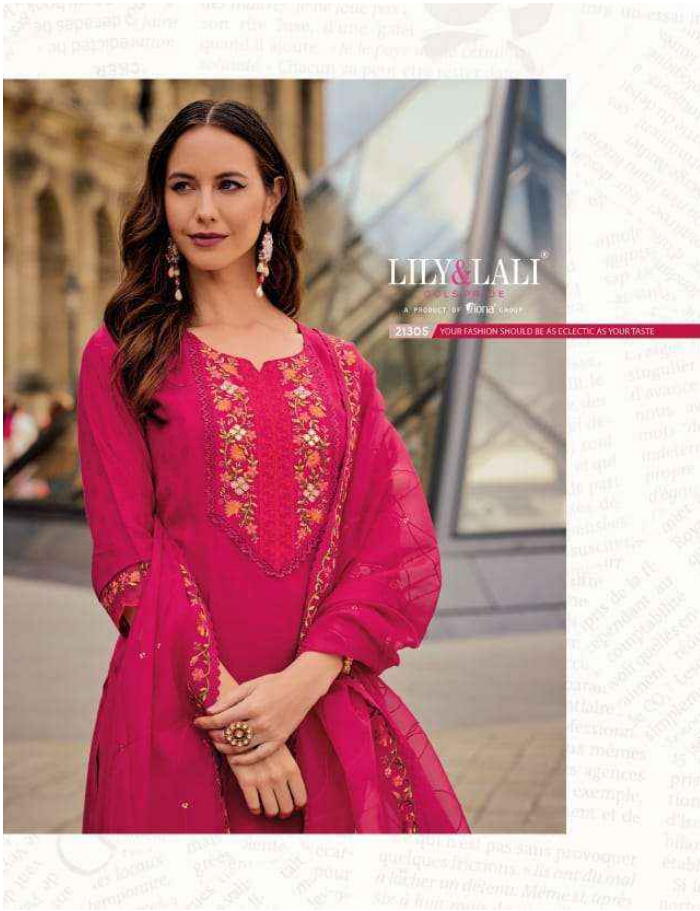
The complex block contains a background of faint, overlapping text in various colors and orientations. It features the brand name 'Lily & Lali' and 'GULS PRIDE' in a bold, black font. Below this, a red banner contains the text '21302 FASHION IS AN EXTENSION OF YOUR PERSONALITY'. Two smaller images of the woman in the red dress are included: one is a close-up of her upper body, and the other is a full-body view.



21303 FASHION IS AN EXTENSION OF YOUR PERSONALITY

**LILY & LALI**  
SINCE 1981  
A PRODUCT OF WORLD GROUP









LILY&LALI®

UL'S PRIDE

A PRODUCT OF Sirona GROUP

Mrunal



## **FABRICS DETAILS**

**: TOP :**

**HANDWORK AND EMBROIDERY ON SELF JACQUARD  
SILK WITH COTTON INNER**

**: BOTTOM :**

**PANT ON MILAN SILK WITH EMBROIDERY LACE**

**: DUPATTA :**

**ORGANZA EMBROIDERY DUPATTA WITH  
FANCY LACE AND TUSSEL**

**: SIZE :**

**M, L, XL, XXL, 3XL**

**NOTE : POCKET INSIDE THE PANT**





21301 LILY & LALI



21302 LILY & LALI



21305 LILY & LALI



21303 LILY & LALI



21304 LILY & LALI



21306 LILY & LALI

LILY & LALI®  
GULSHADE  
A PRODUCT OF BRAND GROUP

Mrunal



LILY & LALI<sup>®</sup>  
GULS PRIDE  
A PRODUCT OF Sfriona<sup>®</sup> GROUP

Mirunal