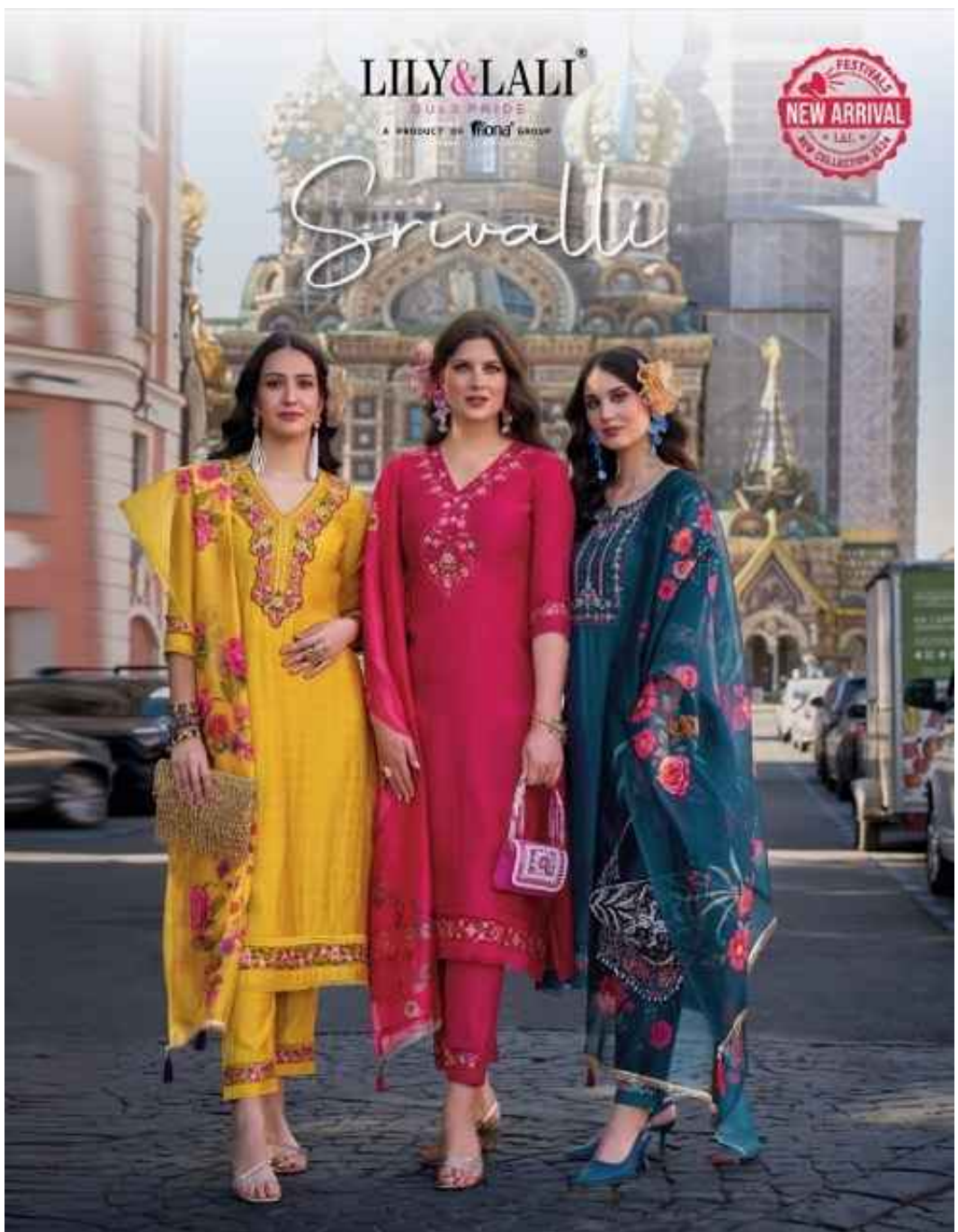


LILY & LALI<sup>®</sup>  
GUSA PRIDE  
A PRODUCT OF FIONA GROUP

FESTIVALS  
NEW ARRIVAL  
LALI  
THE COLLECTION 2024

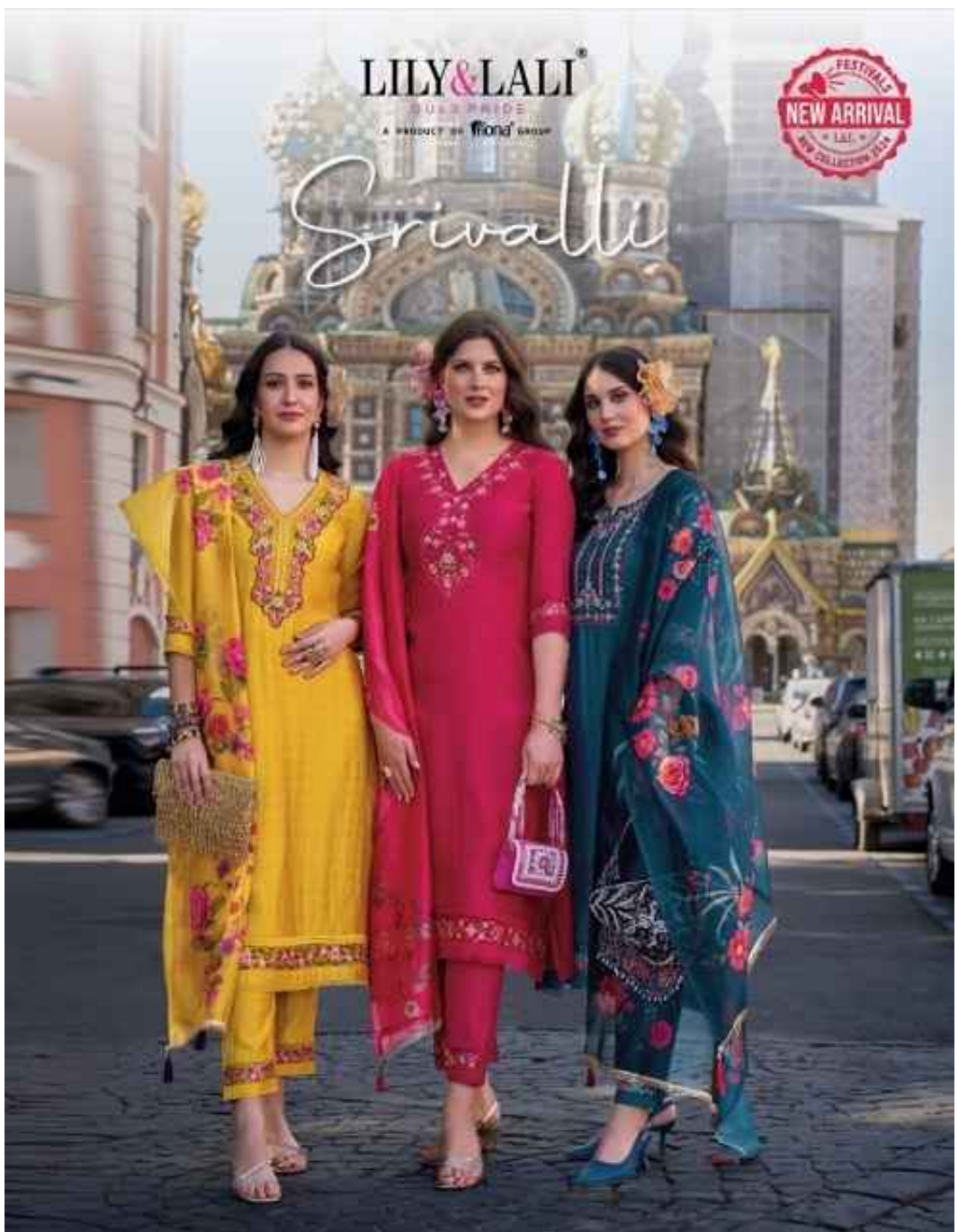
# Srivallu



LILY & LALI<sup>®</sup>  
GUSA PRIDE  
A PRODUCT OF FIONA GROUP

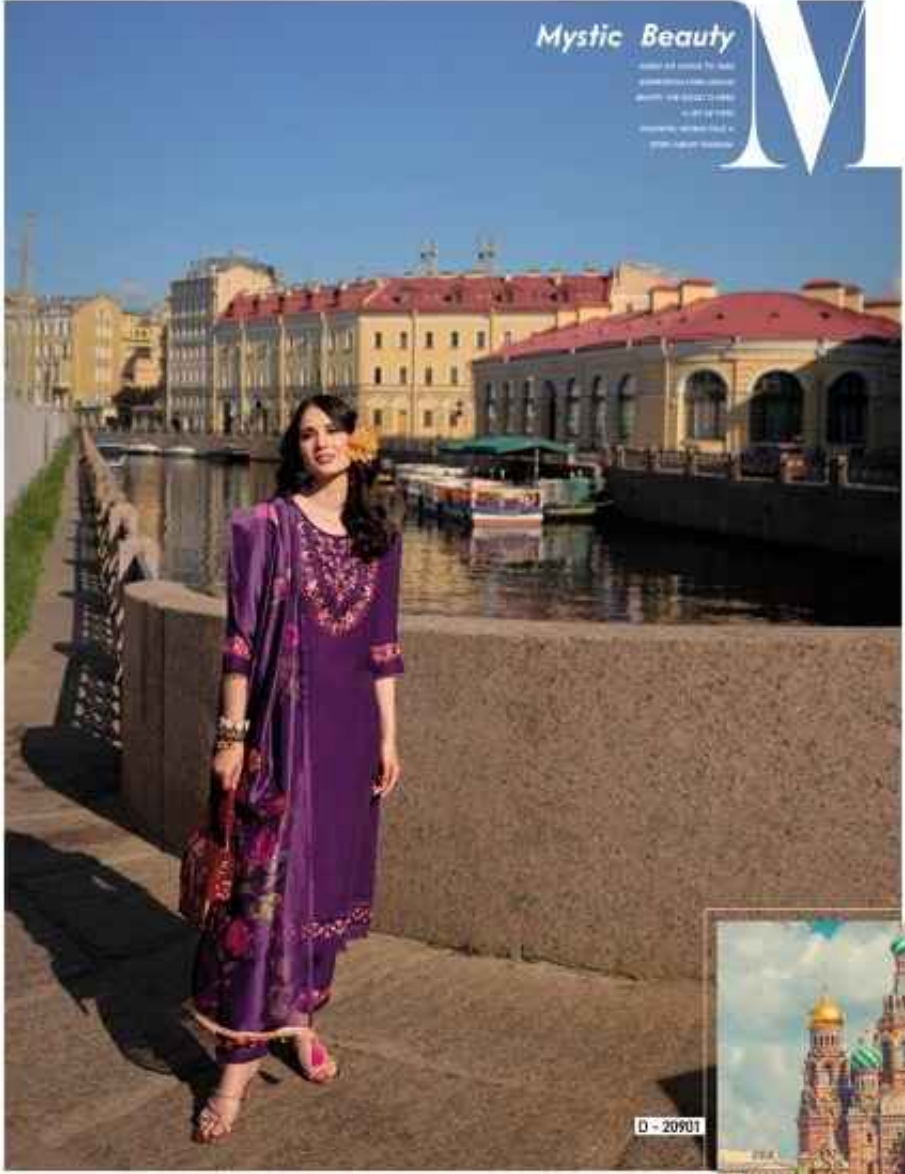
FESTIVALS  
NEW ARRIVAL  
LALI  
THE COLLECTION 2024

# Srivallu



Mystic Beauty

Model: 165 cm, 55 kg  
Dress: 100% Cotton  
Sleeves: 3/4 Length  
Length: 110 cm  
Material: 100% Cotton  
Color: Purple



D - 20901







0 - 20902

### Fresh Look

the classic with  
modern style  
design and  
quality in the  
heart





LILY LALI

ESTABLISHED IN 1999





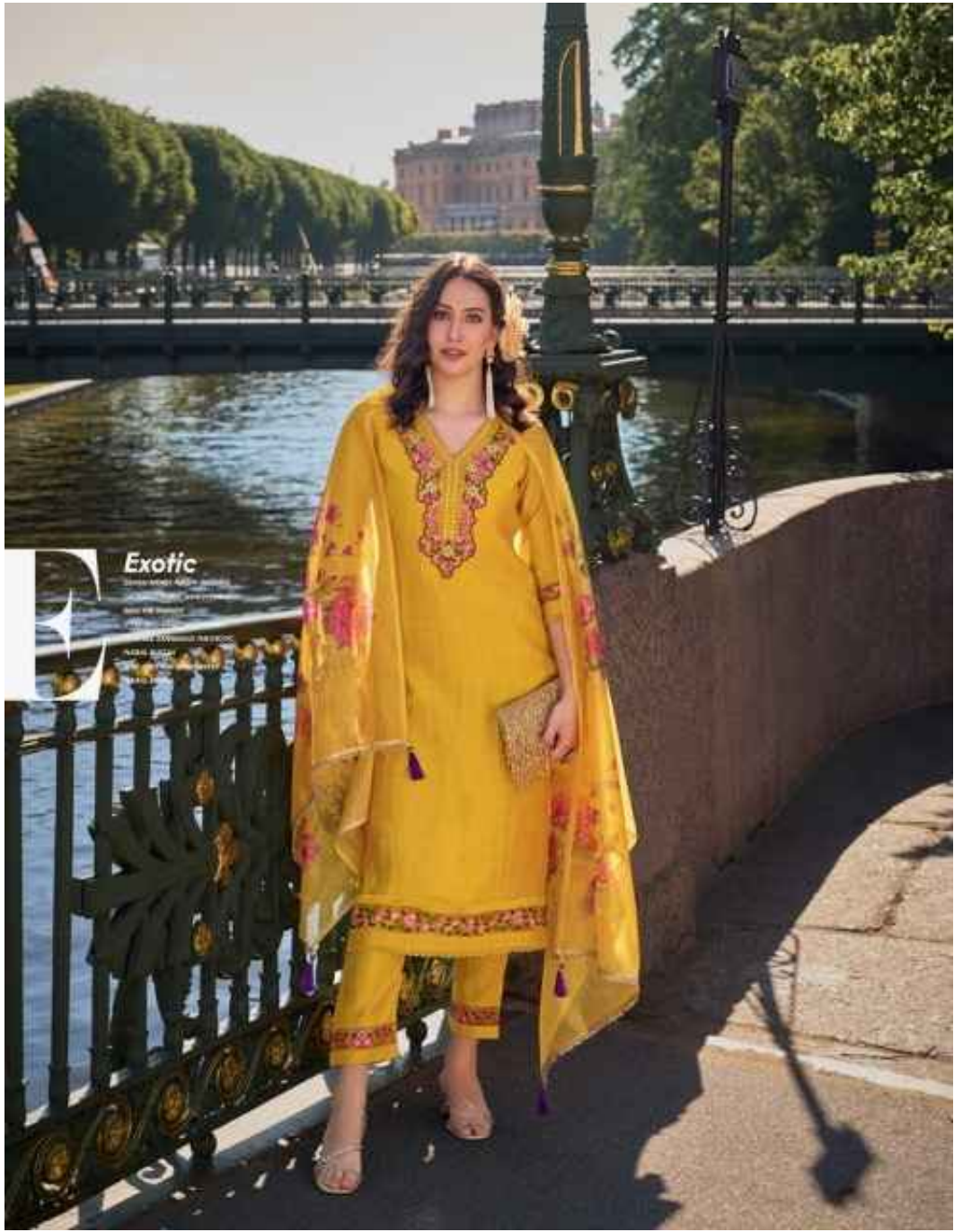
LILY LALI

A BRAND BY SHERI KHAN

Fresh Look

PURE SILK AND PUNJABI  
CONTEMPORARY PATTERNS  
ON LILY LALI FOR THE  
MARRIAGE TO YOUR STYLE



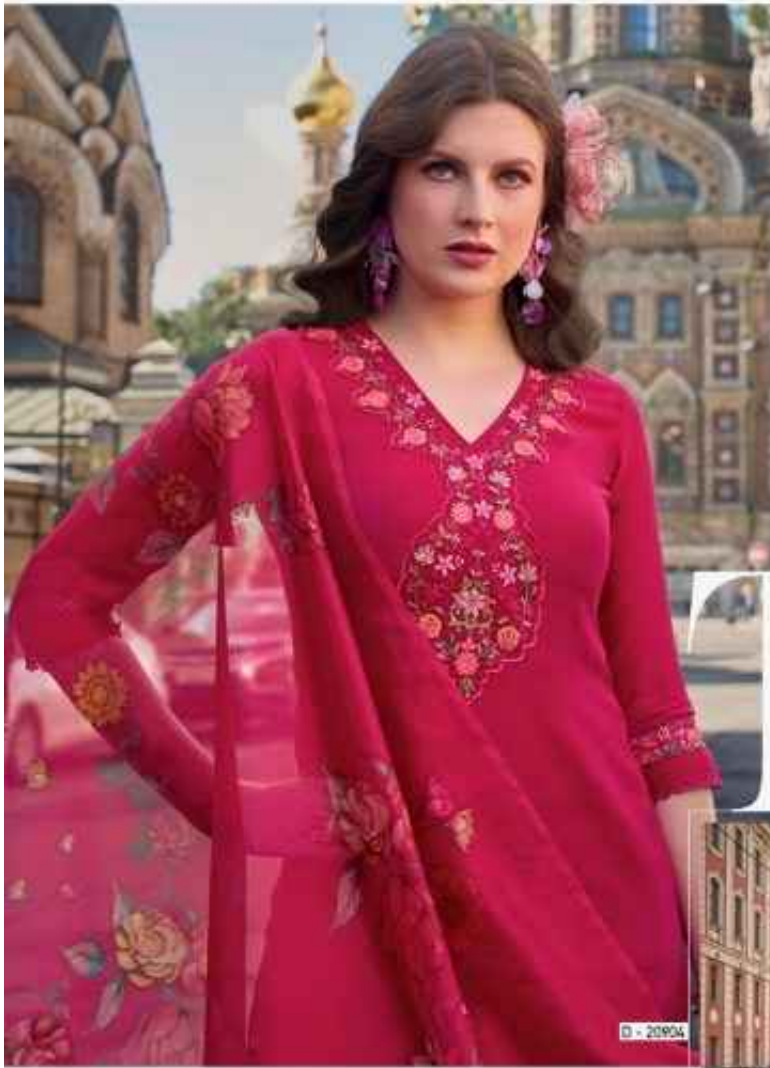








LILY&LALI<sup>®</sup>  
GULSHADE  
A PRODUCT OF **Wafa** GROUP



© - 201904

## Timeless

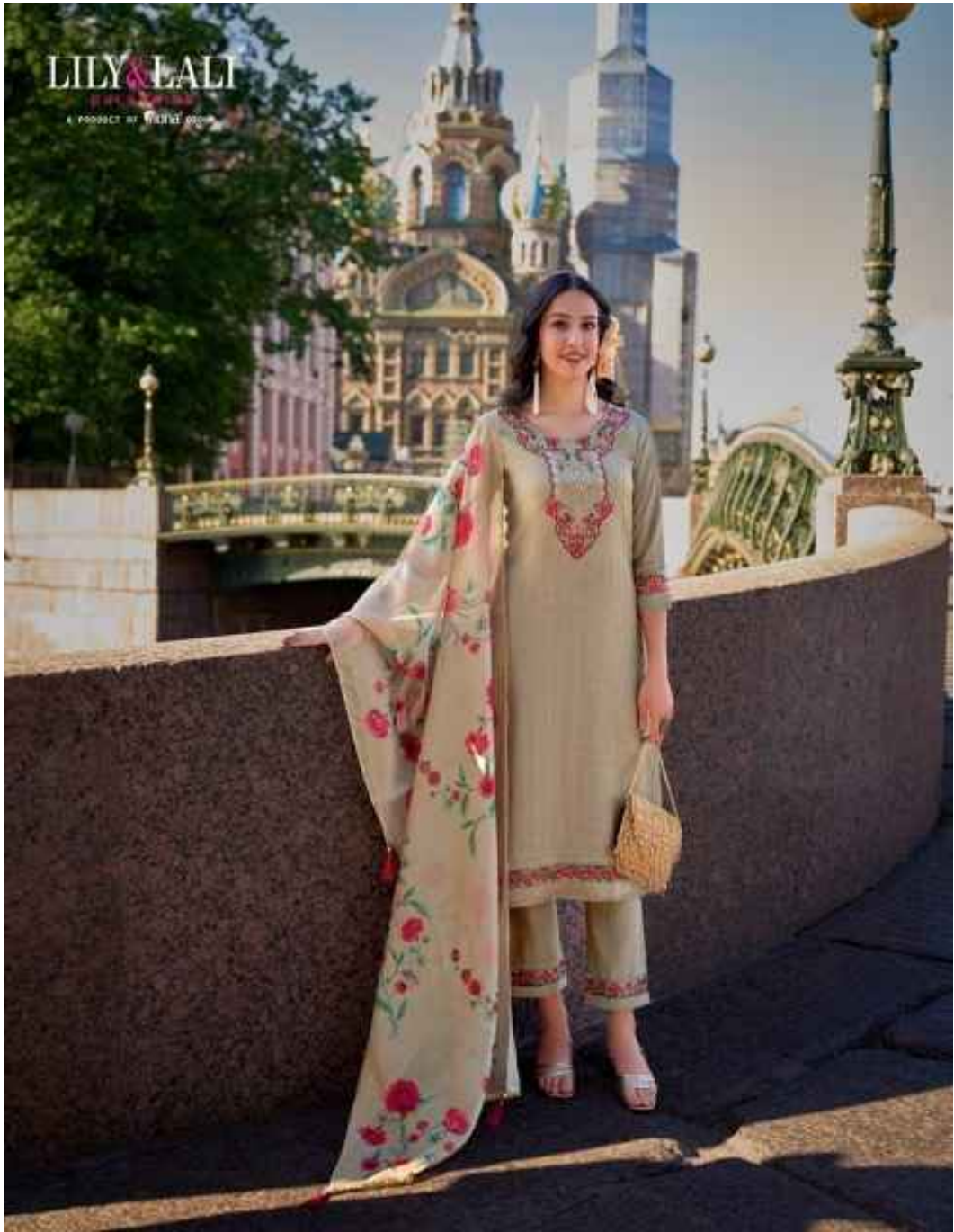
Small text block containing details about the collection, including the name 'Timeless' and possibly a brand or designer name.













## Mystic Beauty

WITH AN EYE TO THE  
CONNECTION WITH NATURE  
BEAUTY AND ART IS  
A WAY OF LIFE  
THESE ARE THE  
ELEMENTS OF



D - 20905



### *Mystic Beauty*

www.ayyub.com  
www.ayyub.com  
www.ayyub.com

