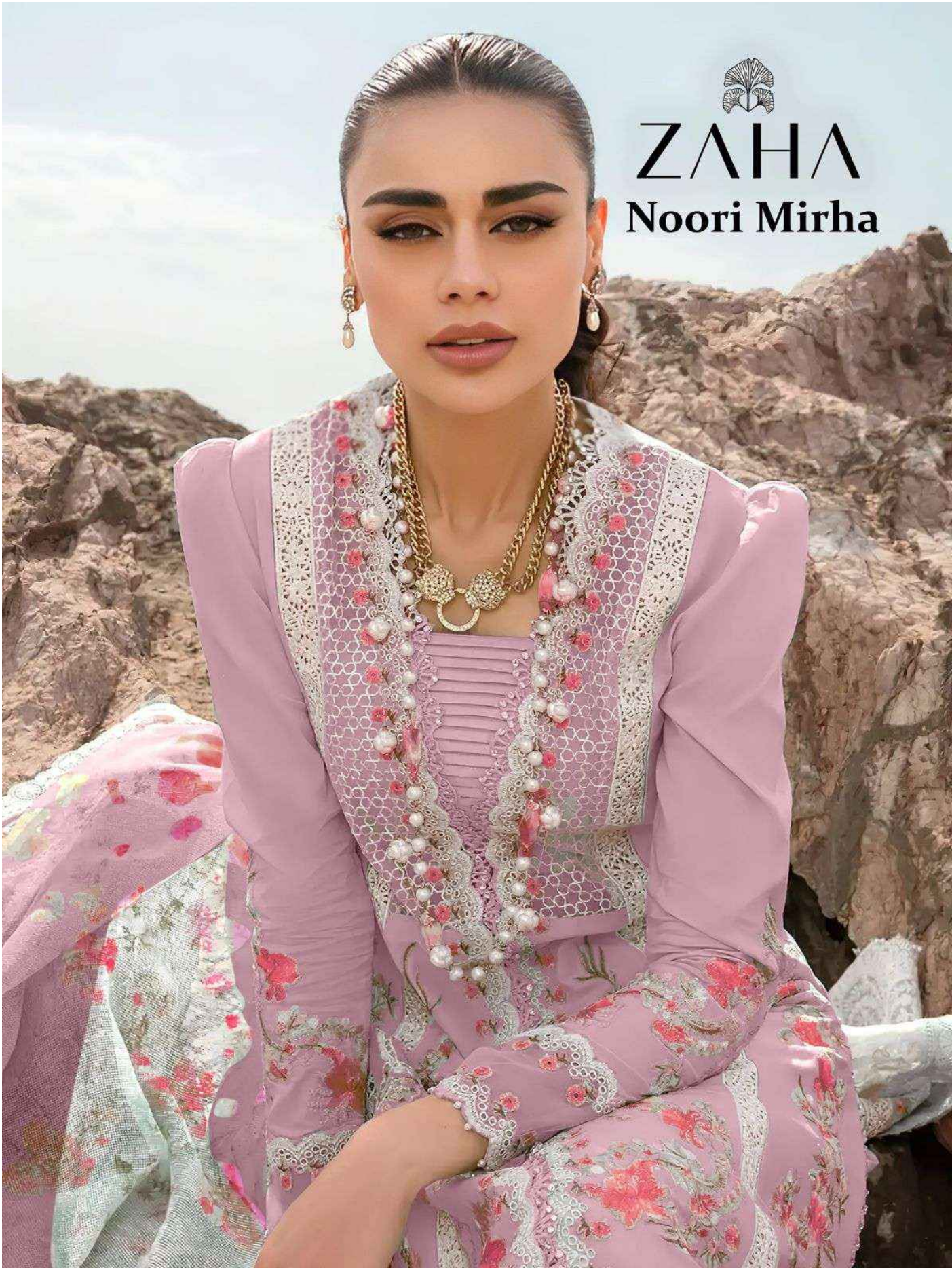
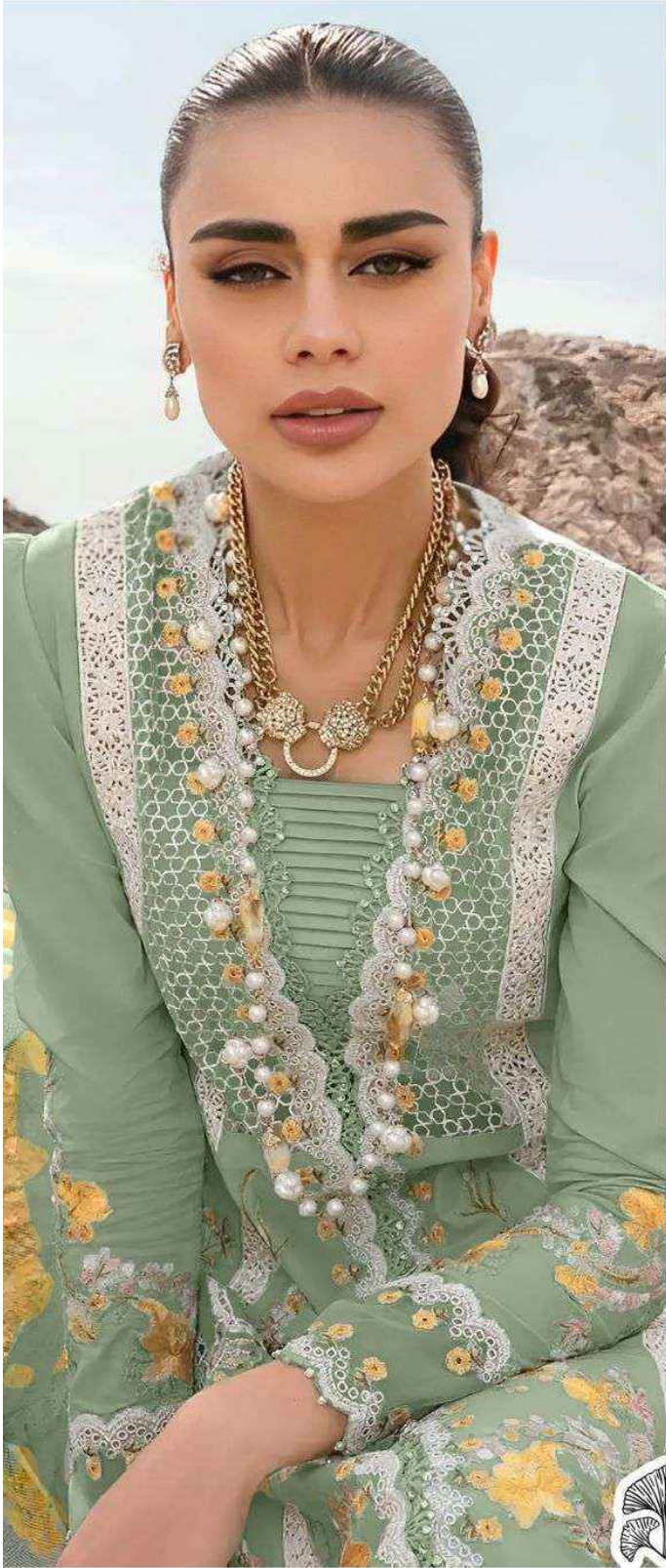




**ZAHA**

**Noori Mirha**





**Noori Mirha**

**ZAHA**

**D.No.10334-A**

**TOP** Cambric Cotton With  
Heavy Embroidery Work

**BOTTOM-INNER** Semi Lawn

**DUPATTA** Tubby Silk with  
Print







**Noori Mirha**

**ZAHA**

**D.No.10334-B**

**TOP** Cambric Cotton With  
Heavy Embroidery Work

**BOTTOM-INNER** Semi Lawn

**DUPATTA** Tubby Silk with  
Print



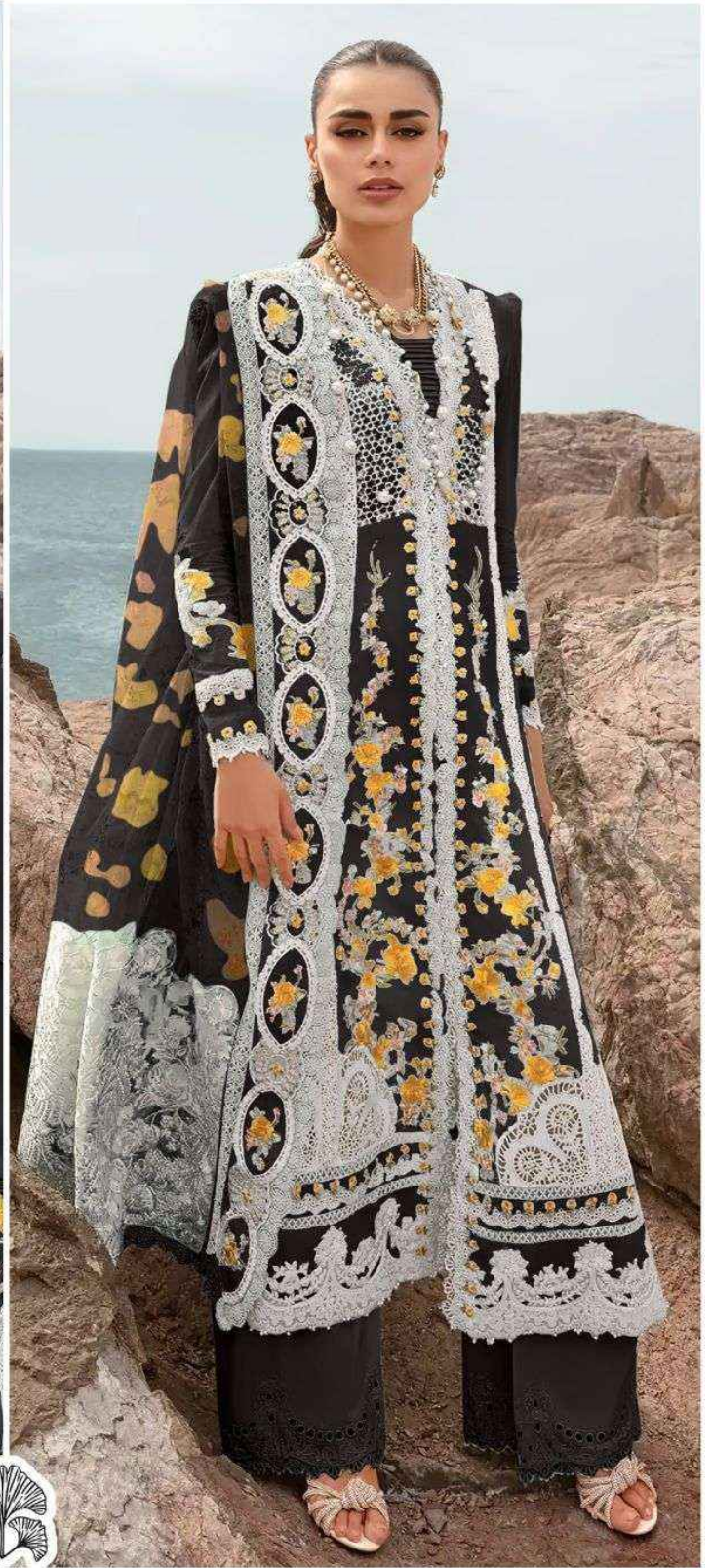
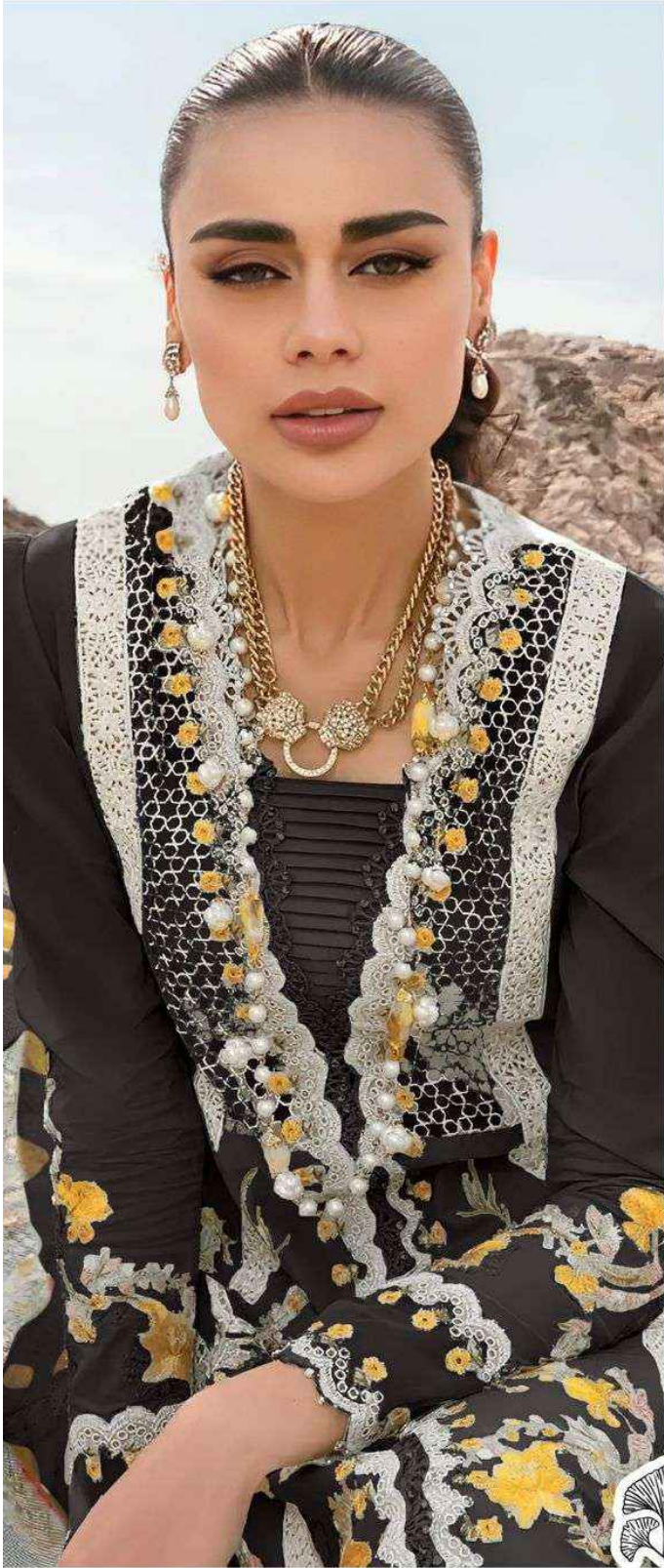
Noori Mirha

Concept



**Noori Mirha**  
TOP - Cambrie Cotton With  
Heavy Embroidery

R 5



**Noori Mirha**

**ZAHA**

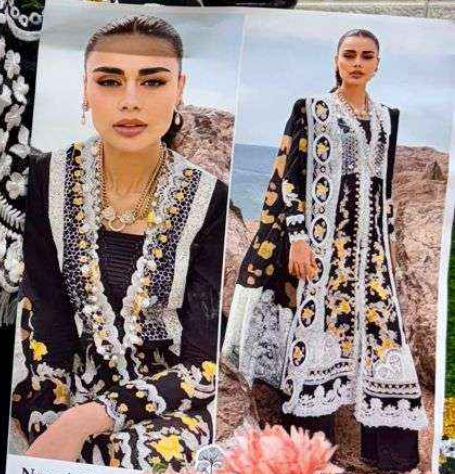
**D.No.10334-C**

**TOP** Cambric Cotton With  
Heavy Embroidery Work

**BOTTOM-INNER** Semi Lawn

**DUPATTA** Tubby Silk with  
Print

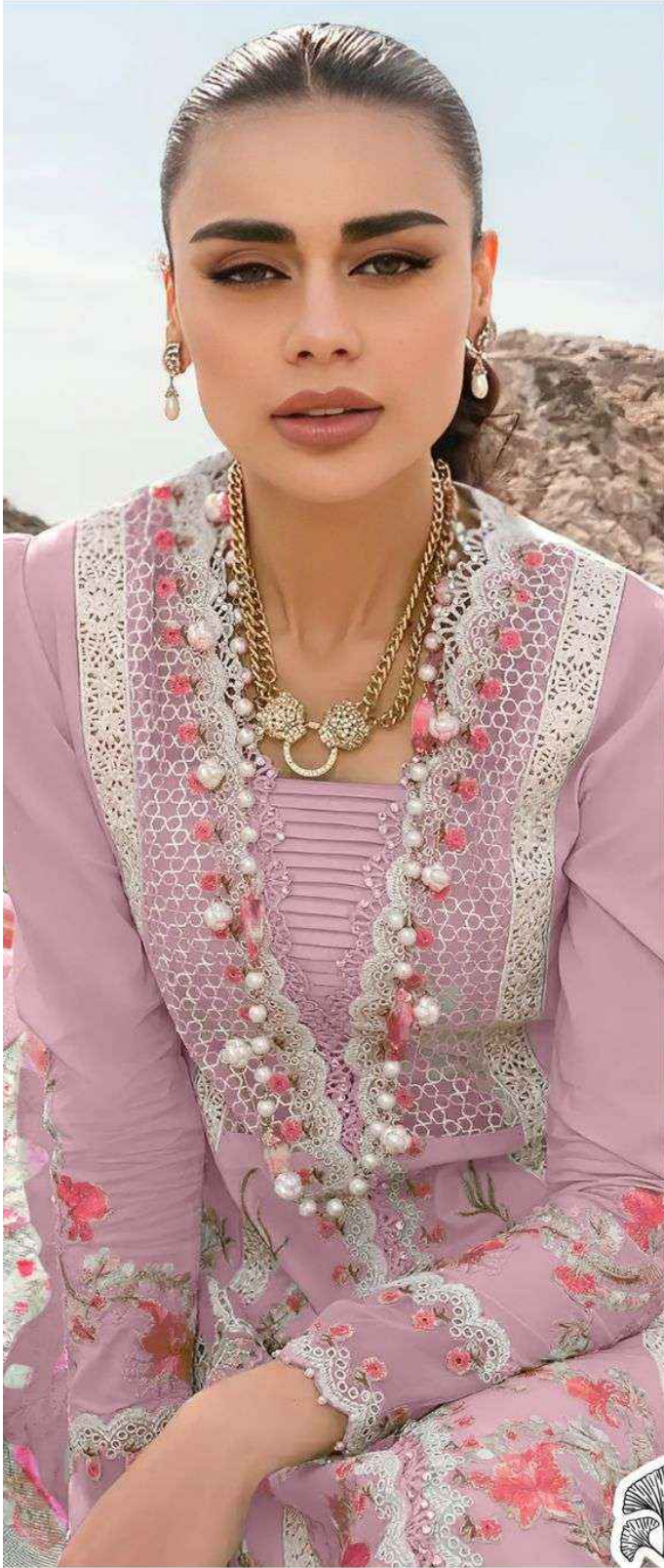




Noori Mirha  
TOP - Cambro Cotton With  
Heavy Embroidery



**Noori Mirha**  
TOP Cambrie Cotton  
Heavy Embroid.



**Noori Mirha**

**ZAHA**

**D.No.10334-D**

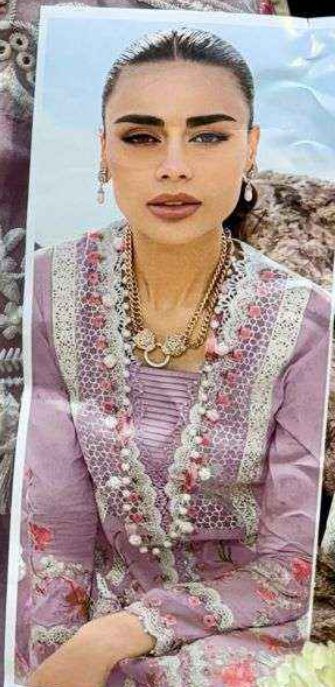
**TOP** Cambric Cotton With  
Heavy Embroidery Work

**BOTTOM-INNER** Semi Lawn

**DUPATTA** Tubby Silk with  
Print



Noori Mirha ZAF  
Cambrie Cotton With Heavy Embroidery Work  
BOTTOM INNER Semi-Lace



**Noori Mirha**  
TOP - Cambrie Cotton With Heavy Embroidery Visc  
BOTTOM-INNEHES

  
**ZAHA**

# Noori Mirha

**TOP** Cambric Cotton With  
Heavy Embroidery Work

**BOTTOM-INNER**  
Semi Lawn

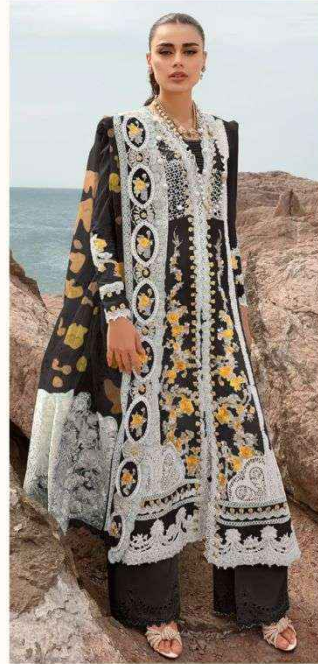
**DUPATTA** Tubby Silk with  
Print



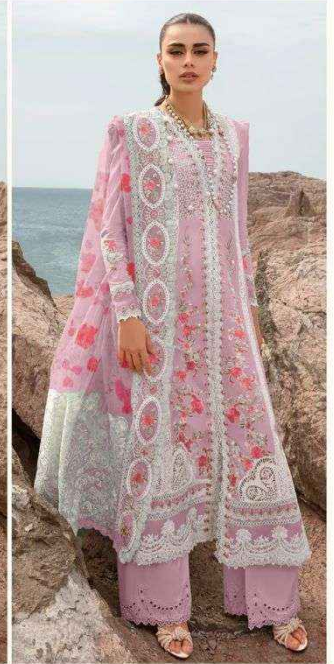
10334-A



10334-B



10334-C



10334-D



**ZAHA**

**Noori Mirha**

