

A woman with dark hair and light makeup is wearing a long-sleeved, light pink silk kurta with intricate white floral embroidery. She is also wearing a matching pink and white patterned scarf and a pearl bracelet. She is holding a small white flower in her hands.

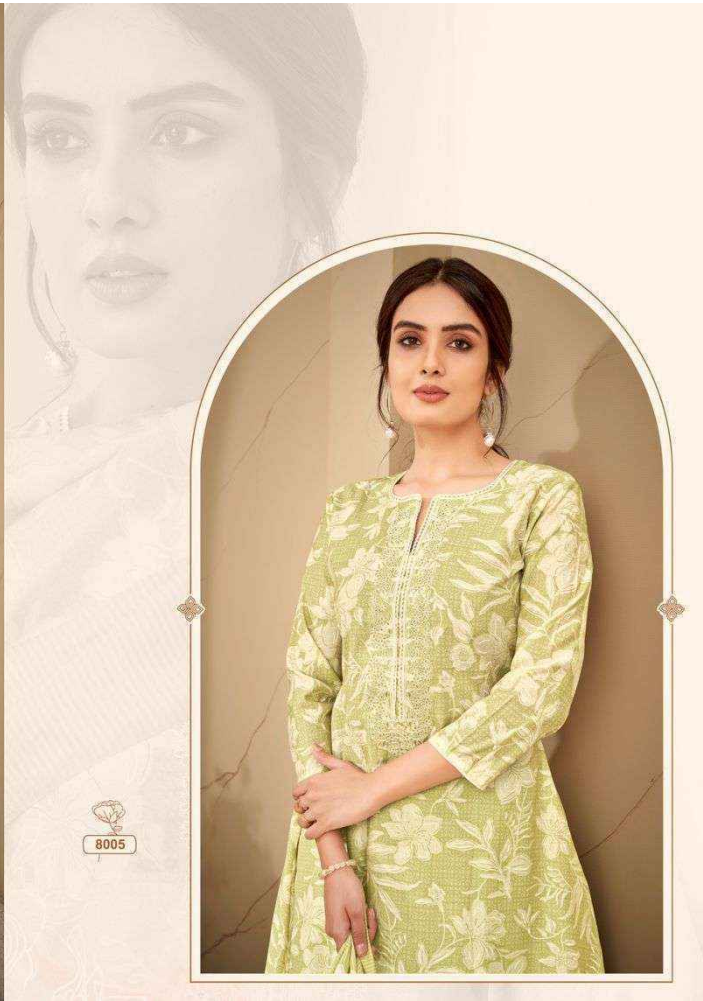
SELVINA SILK
Vol.8

A woman with dark hair and light makeup is the central figure. She is wearing a light pink, long-sleeved silk kurta with intricate white floral embroidery. The embroidery features delicate flowers and leaves, with a vertical line of small sequins or beads down the center of the chest. She is also wearing a matching pink and white patterned shawl draped over her shoulders. Her hands are clasped in front of her, holding a small white flower. She is wearing a pearl bracelet on her right wrist and a ring on her left hand. The background is a simple, warm-toned wall with a curved architectural element on the right.

SELVINA SILK
Vol.8



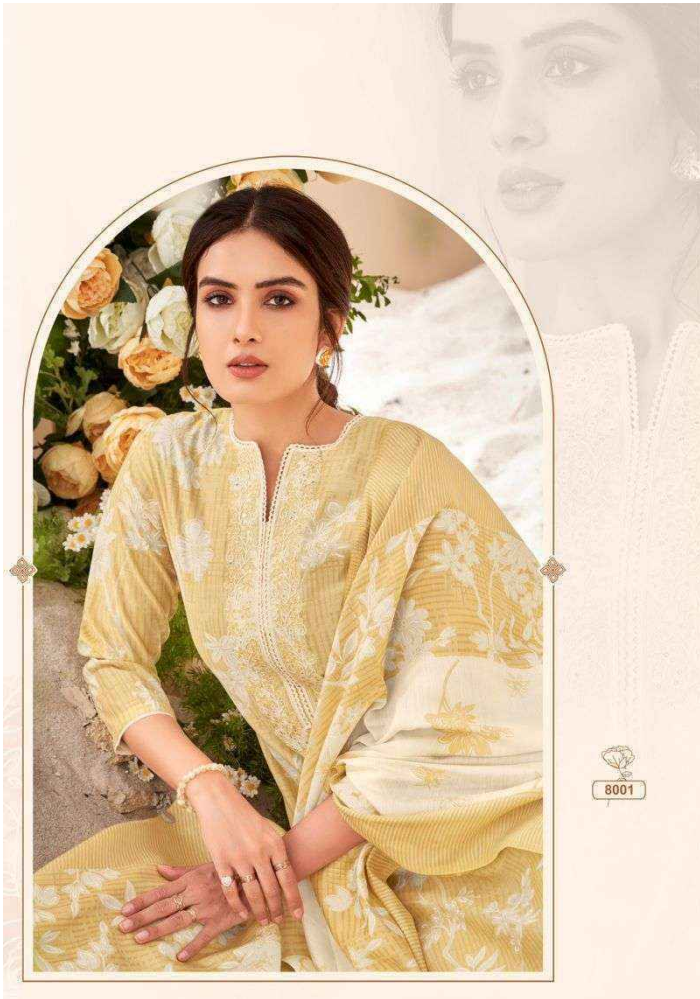
















8001



8002



8003



8004



8005



8006



8007



8008