

LILY & LALI[®]
CLASSIC
A PRODUCT OF FIONA GROUP

Appliqu  





LILY & LALI[®]
CLASSIC
A PRODUCT OF FIONA GROUP

Appliqu  

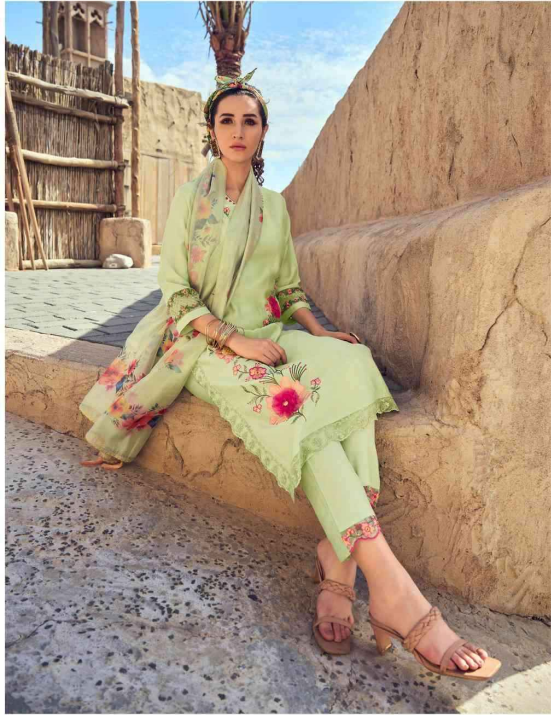




LILY&LALI[®]
GULS PAKISTAN
A PRODUCT OF BANG GROUP



Appliqué — 16401



LILY & LALI[®]
GULSPRIDE
A PRODUCT OF *fiona* GROUP

Appliqué

Two smaller images of women in floral outfits. The top image shows a woman in a pink outfit with floral embroidery, wearing sunglasses and a headband. The bottom image shows a woman in a yellow outfit with floral embroidery. Both images are set against a textured, stone-like background.

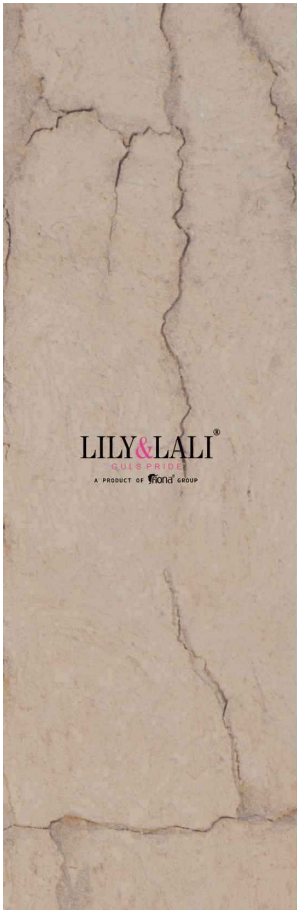




LILY & LALI[®]
A PRODUCT OF FIKIND GROUP



Appliqué — 16405





Applique 16405



LILY & LALI
EST. 2014
A PRODUCT OF FICHA GROUP



Applique

16404

LILY&LALI®
SUSAN DI
A PRODUCT OF MINDI GROUP





LILY & LALI[®]
SUI SUI[®]
A PRODUCT OF SUI GROUP
Appliqué







LILY & LALI
GULS PRIDE
A PRODUCT OF FORTI GROUP

Appliqué 16403

Appliqué



Appliqué 16401



Appliqué 16402



Appliqué 16403



Appliqué 16404



Appliqué 16405



Appliqué 16406

LILY & LALI
ESTD 1998
A PRODUCT OF CRAFTS GROUP

Appliqué



LILY&LALI®
GULS PRIDE
A PRODUCT OF firona® GROUP

FABRICS DETAILS

: TOP :

APPLIQUÉ FLOWER, EMBROIDERY AND HANDWORK ON
MILAN SILK WITH COTTON LINING

: BOTTOM :

ORGANZA EMBROIDERY LACE ON MILAN SILK

: DUPATTA :

PURE ORGANZA PRINT DUPATTA (36") WITH LACE AND
TUSSELE

SIZE : M,L,XL,XXL,3XL

NOTE : POCKET IN SIDE THE PANT

