







*Explore the beauty of cutting edge design and effortless cool in our latest designs.*

*Shree Shalika*  
FASHION

*"Create your look with smart, quality pieces that redefine contemporary style."*



"culture fashion" (Mandir ke Dwaro mein Rangoli)  
Style - 3003





Code = 3001



Code = 3002



Code = 3003



Code = 3004

# Mahjabeen Vol 03

Code = 3005



Code = 3006



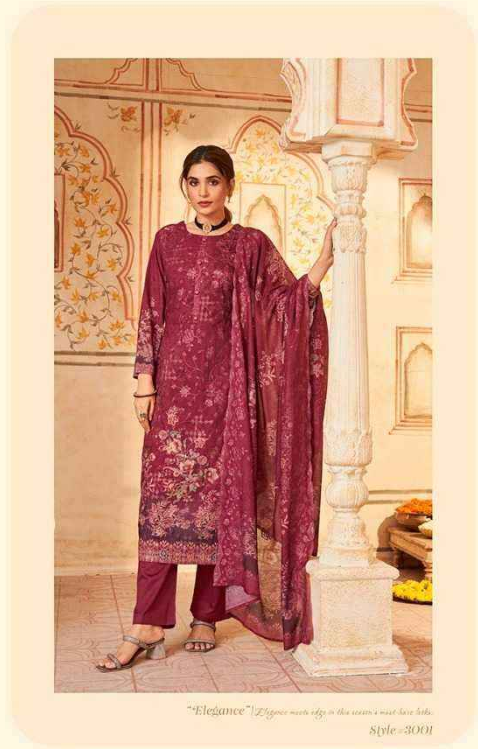
Shree Shalika  
FASHION

Code = 3007



Code = 3008







"Fashion" is the art of style with an careful selection of every single design.  
Style : 3002



"Fashion" [Dive into the domain of style with our curated selection of finest quality designs]  
Style - 3008



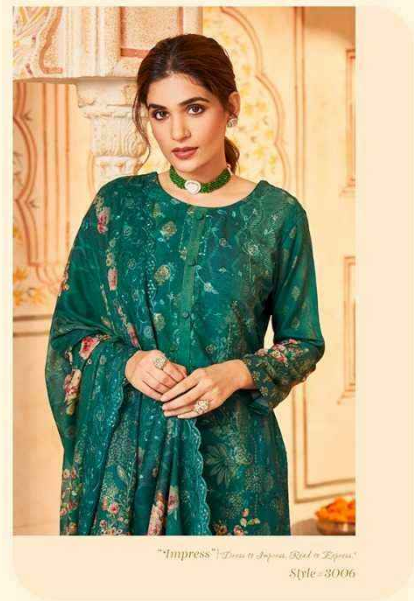


"Designs" Explore the beauty of cutting, dye, drapes and accessories with a new latest design.  
Style - 3007



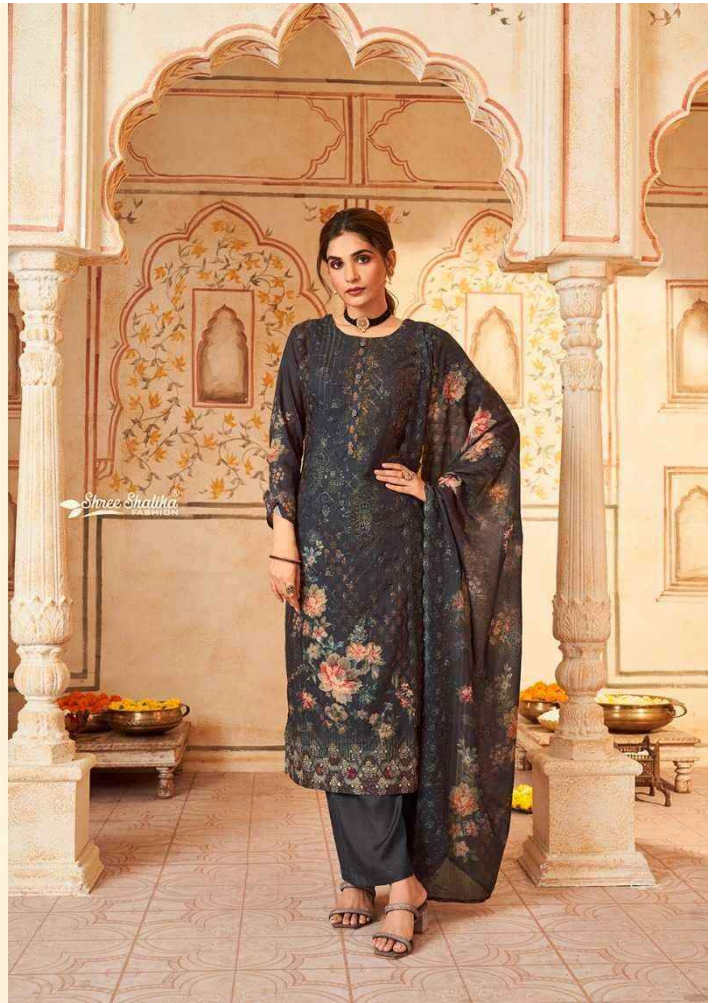


"Excellence" | Ready To Wear, Your Passport to Fashion Excellence |  
Style - 3004





"Artistry" | Beyond Style, Exploring the Artistry of Fashion.  
Style - 3005



*Siree Shalika*  
FASHION

*"Excellence In Every Detail, Your Request Is Our Excellence."*





*Shree Shalika*  
FASHION

*"Impress | Dress to Impress | Real is Legend"*





*Shree Shalika*<sup>®</sup>  
FASHION  
House of Designer Dress Materials

# Mahjabeen

Vol.03

**\*FABRIC DETAILS\***

TOP : COTTON LAWN DIGITAL PRINT WITH  
EMBROIDERY WORK

BOTTOM : PURE CAMRIC

DUPATTA : COTTON MAL DIGITAL PRINT WITH  
EMBROIDERY WORK

**\*DESIGN NUMBER\***

3001 TO 3006

**\*RATE\***

1395/- EACH