





#R-603-A



TOP - GEORGET EMBROIDERY
BOTTOM - DULL SANTOON
DUPATTA - NAZMEEN EMBROIDERY

- Ⓟ DRY CLEAN ONLY.
- ✗ DO NOT USE ANY BLEACH OR STAIN REMOVING CHEMICAL.
- ☎ IRON THE FABRIC AT MODERATE TEMPERATURE.





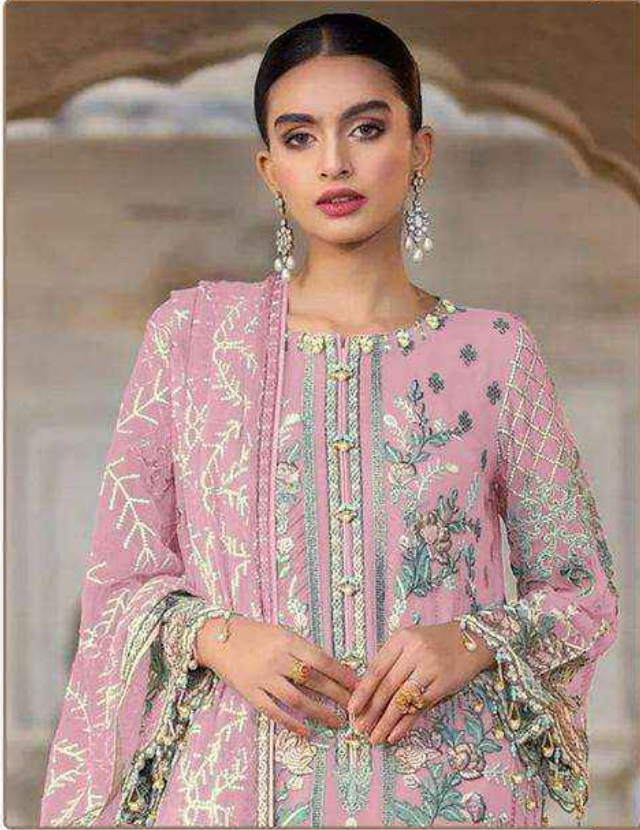
Ramsha
#R-603-A

TOP - GEORGETT EMBROIDERY
BOTTOM - HILL SANTOON
DUPATTA - NAZAREEN EMBROIDERY

DO NOT CLEAN ONLY
DO NOT USE ANY BLEACH OR STAIN REMOVING CHEMICAL
USE THE FABRIC AT MEDIUM BATH TEMPERATURE



#R-603-B



TOP - GEORGET EMBROIDERY
BOTTOM- DULL SANTOON
DUPATTA - NAZMEEN EMBROIDERY

- Ⓟ DRY CLEAN ONLY.
- ✘ DO NOT USE ANY BLEACH OR STAIN REMOVING CHEMICAL.
- ☎ IRON THE FABRIC AT MODERATE TEMPERATURE.





Ramsha
#R-603-B

TOP: GEORGET EMBROIDERY
BOTTOM: PULL SANFOON
DUPATTA: SHAKHEEN EMBROIDERY

© 2015 CLEAR FASHION. BLEACH OR STAIN REMOVING CHEMICAL.
WASH IN COLD WATER AT MODERATE TEMPERATURES.



#R-603-C



TOP - GEORGET EMBROIDERY
BOTTOM - DULL SANTOON
DUPATTA - NAZMEEN EMBROIDERY



Ⓟ DRY CLEAN ONLY.
ⓧ DO NOT USE ANY BLEACH OR STAIN REMOVING CHEMICAL.
Ⓜ IRON THE FABRIC AT MODERATE TEMPERATURE.



Ramsha
#R-603-C

TOP- GEORGET EMBROIDERY
BOTTOM- DULI SANTOON
DUPATTA- NADEEM EMBROIDERY

DRY CLEAN ONLY
DO NOT USE BLEACH OR STAIN REMOVING CHEMICALS
IRON FABRIC AT MODERATE TEMPERATURE.



#R-603-D



TOP - GEORGET EMBROIDERY
BOTTOM - DULL SANTOON
DUPATTA - NAZMEEN EMBROIDERY



Ⓟ DRY CLEAN ONLY.
✗ DO NOT USE ANY BLEACH OR STAIN REMOVING CHEMICAL.
☎ IRON THE FABRIC AT MODERATE TEMPERATURE.

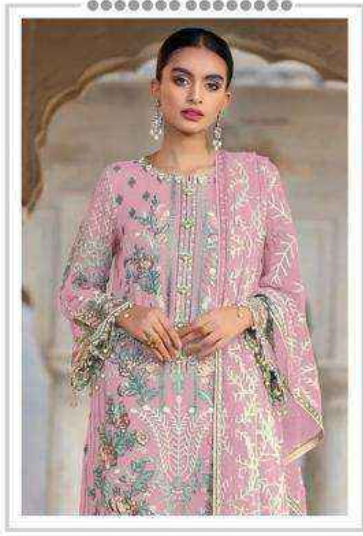


Ramsha
#R-603-D

TOP: GEORGETT EMBROIDERY
BODY: DULL SANTOON
DUPATTA: PALMSEEN EMBROIDERY

DRY CLEAN ONLY
DO NOT USE BLEACH OR STAIN REMOVING CHEMICAL
WASHING FABRIC AT MODERATE TEMP. SALTIVE

Ramsha®
603-NX



Ramsha®
603-NX



#R-603-A



#R-603-B



#R-603-C



#R-603-D

